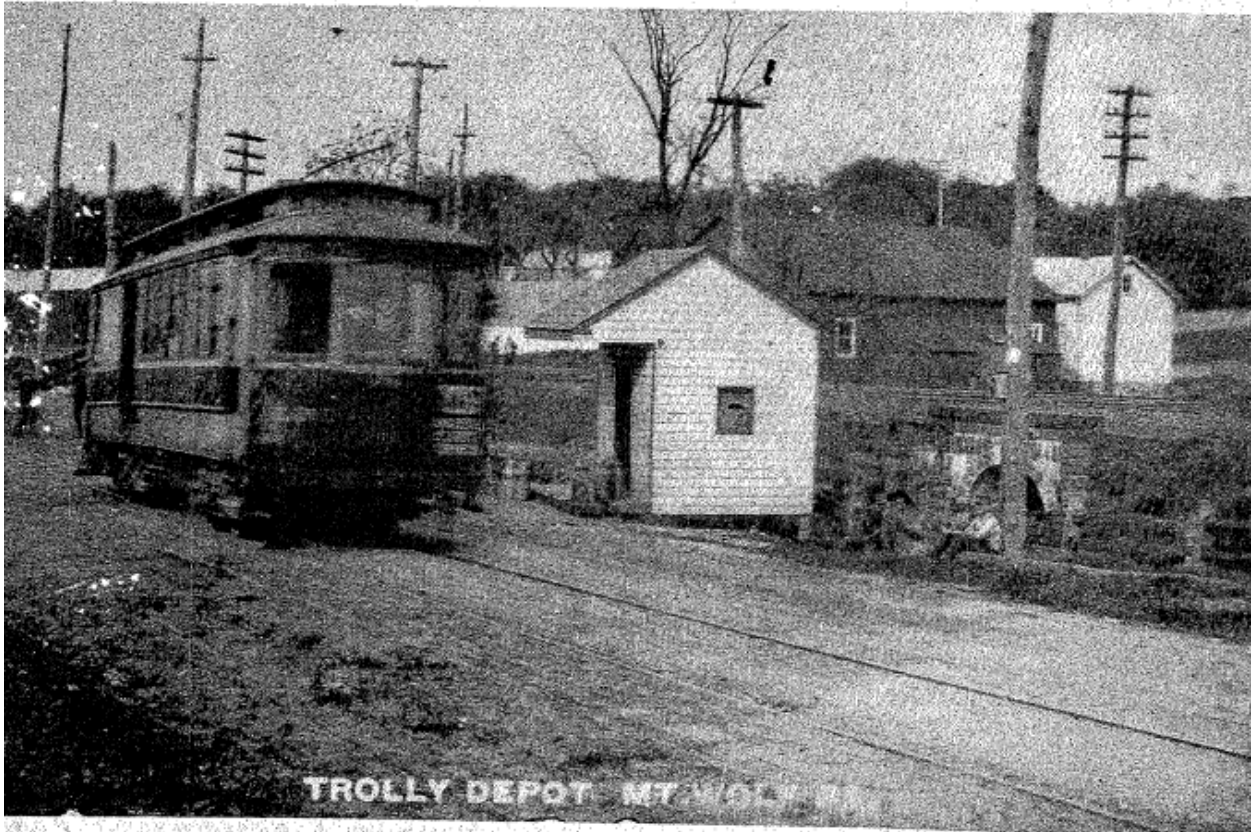


REMEMBER WHEN ?



The trolley ran from York Haven to Mt. Wolf. The depot was located on Maple Street in Mt. Wolf just prior to crossing the railroad tracks.

A Brief History of Mt. Wolf

During the first dozen years of Mount Wolf's existence, its importance was not located in the development of a new village, but in its service to the neighboring farms and small towns. Of greatest value was the rail station, for it caused Mount Wolf to be the hub of activity in the eastern most part of Manchester Township. One can imagine the busyness surrounding the train depot and Wolf's store, which together supplied the outlying community with nearly all the goods and services it needed. Local trains brought mail and visitors, store goods and building supplies. Farm products traded to A. Wolf and Sons found its way to larger commercial centers connected by the railroad.

Few homes were built in the new town until after the Civil War. There were perhaps a half dozen new homes built during the 1850's, although there is no evidence to indicate that any but the structures around Wolf's store were finished before 1856. The oldest house in town was of course the farm house of Henry Hoff, which is still standing at the south end of Third Street. On the Holland Road at the south end of town were at least two dwellings - the home of Henry Bonge and a log school house attended by the farm children living between Manchester and Starview. The school house has been a residence since 1870 and was until recently the home of Ruth Livingston Lehr.

One gains a picturesque image of the area surrounding Mount Wolf during the early 1800's. To the east was the river and its settlements, booming with commerce and local color, expectant with congregations in the area. Children attended a two story brick school located across from the U. B. Church near the center of town. Several

small cigar and cigar box factories had joined the Wolf concern in offering employment to the residents.

George H. Wolf had incorporated with his two sons Henry and George A. in 1882; the two sons took over the business entirely in 1891 when their father retired from the company he had headed for 39 years. George A. Wolf succeeded his father as postmaster in 1889 and served until 1893.

During the final decade of the nineteenth century numerous repair shops and general merchandise stores expanded the commercial development of the community. One such business which continued into the present was Diehl's Furniture and Undertaking. Having learned the trade of cabinet making from his uncle, Daniel D. Diehl, Albert had moved to York and worked with the Weaver Organ and Piano Company. After three years in the city he returned to Mount Wolf and bought out his uncle's business, as well as beginning the profession of undertaking. For a time Mr. Diehl also operated a furniture store in York Haven, but he sold that concern in 1898 to devote full time to his enterprises in Mount Wolf. In 1901 he built a large double house consisting of three stories; Diehl's Home Furnishings and the L. E. Diehl Funeral Home continue at that location at present.

Nearly fifty years after the railroad gave cause for the settlement of a village, Mount Wolf moved headstrong into the age of industrialization. At least two new factories were constructed in 1899, a year made dizzy with business speculation, all of it successful.

In November, before the turn of the century, the Mount Wolf Furniture Company was incorporated with a capital investment of \$18,000. The entire stock of the company was purchased by citizens of the town. The officers and Board of Directors included Henry Wolf, President; Albert H. Diehl, Secretary; J. G. Kunkel, Treasurer, George A. Wolf, William Linebaugh, I. Park Wagon, J. M. Rodes, John H. Wagan, and Alfred Snyder. A three-story brick factory was built near the tracks behind Wolf's store. Within a few years there were employed regularly about eighty workmen. The sideboards made by the Mount Wolf Furniture Company were shipped east to Philadelphia and New York.

The same month Henry and

George A. Wolf associated with C. H. Hummelbaugh, John Kibbler, and Henry Hoff to found the Mount Wolf Shirt Company. A large frame building was erected on North Main Street and soon came to employ about thirty women. Another account of this business boom refers to the Mount Wolf Manufacturing Company. It is assumed that the Manufacturing Co. and the Shirt Company were one and the same.

What was to become the largest industry in Mount Wolf was begun in 1904. The Pennsylvania Wire Cloth Company incorporated with Carlton L. Hoff, President, W. H. Ottermiller, Vice President, Henry Wolf, Treasurer, and George A. Wolf, Secretary. The Board of Directors also included W. S. Schroll, M. G. King, C. K. Anderson and H. L. Eichinger. The first building 180x90 feet was erected between Main Street and the railroad at the north end of town; by 1905 an annex 60x90 feet was completed. Initially the wire cloth factory employed about thirty men.