



# WOLF'S

MOUNT WOLF, PA.



PUBLISHED BY  
**GEO. A. WOLF & SONS**  
MOUNT WOLF, PA.

# **MOUNT WOLF, PA.**

## **The Place to Live**

Situated as it is on an elevation, Mount Wolf has good natural drainage. The air is pure; the people are healthy. The streets, laid out in orderly fashion, are broad and clean and have cement sidewalks and curbing. There are many neat, comfortable and attractive looking homes; and paint is used freely to preserve their fine appearance. No sooner does the visitor arrive in Mount Wolf than he is impressed with the fact that it is a flourishing town where good citizenship, public spirit and enterprise prevail.

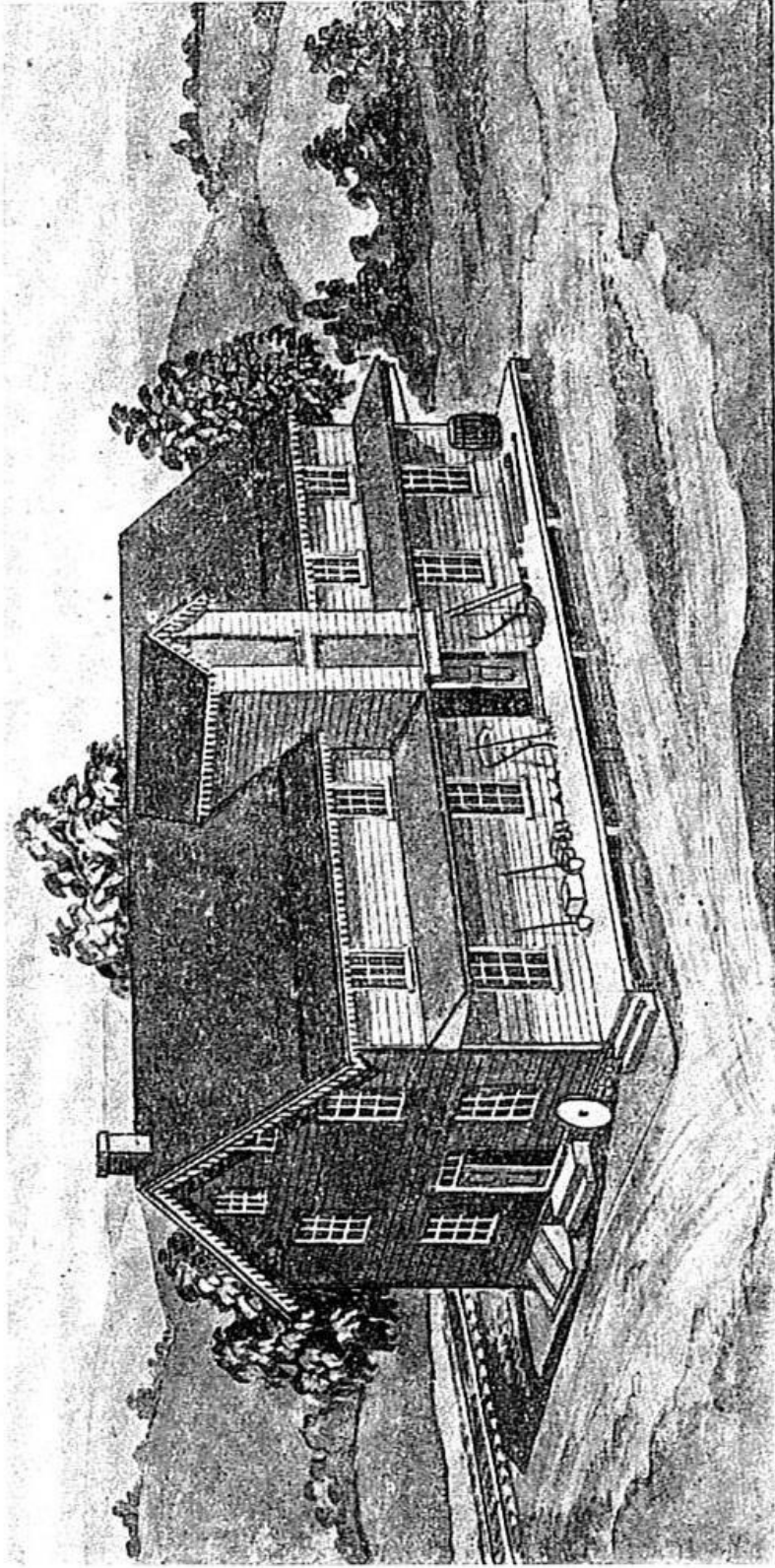
---

**Buy a Lot in Mount Wolf and Then Build a Home — OR — Consult Those Who Build Houses for Sale and Can Satisfy Your Wishes**

---

The prosperous borough of Mount Wolf has a population of 1000. Ninety out of each hundred families are home-owners and home lovers. Located 20 miles South of Harrisburg and 8 miles North of York on the Main Line of the Pennsylvania Railroad, between Harrisburg and Washington, good train service is afforded the citizens of the borough. The York Haven Trolley line also provides transportation to York. Good, hard-surfaced roads to York have reduced the distance to that city to 20 minutes by automobile.

The Wolf's, in Mount Wolf, are always glad to give information to travelers and prospective citizens. If you consider living in a small but enterprising community, Mount Wolf is the place for you. Pay us a visit, and OWN YOUR HOME IN MOUNT WOLF.



Establishment 72 Years Ago

## Dedication

---

**T**HIS book is compiled in honor of our father, Mr. Geo. A. Wolf, who has given forty-two years of his life to the business. The success attained during the past ten years is due to his splendid advice and guidance. We dedicate this booklet to him as a token of appreciation, for none realize the value of his direction and assistance better than his three sons:

GEORGE H.  
CHARLES B.  
EARLE L.



### OUR CREED

*Straight Business*  
*Fair Dealing*  
*Good Service*  
*Satisfied Customers*

## Foreword



**O**UR earlier booklet, entitled, "History of Mount Wolf," issued in December, 1921, brought forth so many favorable comments and kindly expressions from our numerous friends and customers that we have been prompted to compile this "History of the Wolf's in Mount Wolf," as a feature in connection with the tenth anniversary of the organization of the present firm of Geo. A. Wolf & Sons: May 7, 1914 to May 7, 1924.



## NAMES AND DATES OF FORMER FIRMS



### AT NEW HOLLAND, PA.

A. & E. Wolf—March 21, 1843, to March 13, 1852.

*Adam and Edmund Wolf.*

---

### AT MOUNT WOLF, PA.

A. Wolf & Sons—March 14, 1852, to October 25, 1863.

*Adam, William W., and Geo. H. Wolf.*

G. H. Wolf—Oct. 26, 1863, to Mar. 31, 1882.

*Geo. H. Wolf.*

G. H. Wolf & Sons—April 1, 1882, to July 23, 1891.

*Geo. H., Henry, and Geo. A. Wolf.*

G. H. Wolf's Sons—July 24, 1891, to May 6, 1914.

*Henry and Geo. A. Wolf.*

Geo. A. Wolf & Sons—May 7, 1914, to —  
*Geo. A., Geo. H., Chas. B., and Earle L. Wolf.*

HISTORY  
*of*  
THE WOLF'S  
IN  
MOUNT WOLF, PA.

---



IN the early part of the 18th Century, many inhabitants of Pennsylvania were living along the great Susquehanna River which afforded them means of transportation. The York County side of that river had three landing places for rafts, namely, Eibs Landing, New Holland, and Wrightsville. Great quantities of lumber were hauled from these places to York, Hanover and Gettysburg. The Wolf family had settled at what is now known as Wolf's Church, between York and Hanover. Adam Wolf left this community and moved his family to New Holland where he operated a tannery. A family, consisting of four girls and three boys, was reared. The names of the children were, William, Susan, Edmund, Anna, George, Mary and Sarah. They grew to manhood and womanhood, always greatly interested in the shad fisheries along the Susquehanna. While several of them were fishing during a moonlight night, a school of shad was seen coming up stream, and a hurry call was sent out to launch the net which was 130 yards long. Great difficulty was experienced in handling this catch, and no wonder! When it was finally landed, the fishermen found that over five thousand shad were caught! The largest one weighed eleven pounds. It is easy, therefore, to realize that shad in those days sold for only four cents each!

## The Family of Adam Wolf

On March 21, 1843, Adam Wolf, with his oldest son Edmund, opened a store in New Holland under the firm name of A. Wolf & Son. This store business was carried on for nine years.

In 1850 the single-track railroad was built connecting Harrisburg, York and Baltimore. In the Spring of 1852, Adam Wolf realized the possibilities of locating near a railroad, after taking an inventory of his stock he sold out to the firm of A. Wolf & Sons. The organization then included the two younger sons, William W. and Geo. H. Wolf. A store and warehouse 36' x 60' was built consisting of three floors and basement. That new warehouse was the first business house in this community.

At that time, however no name had been given to this locality; but after Geo. H. Wolf was appointed agent, the railroad officials gave this station the name of Mount Wolf. The word "Mount" coming from the high elevation, and the word "Wolf" in honor of Geo. H. Wolf the agent.

Adam Wolf never moved to Mount Wolf, but the two sons did; and they took the responsibility of the business upon them. They dealt in Lumber, Feed and General Merchandise. At least 75% of the business at this time was done in trading. The farmers brought grains, butter and eggs, and received in exchange merchandise. Eggs were taken in at 6c. per dozen, butter at 9c. per pound, and wheat at 62c. per bushel. Very few cash transactions were made until April 1, known as "settling day."

Opposite the Wolf store, an old fashioned Camp Meeting was held each Summer and attracted large crowds.



### **Confederate Soldiers in Mount Wolf**

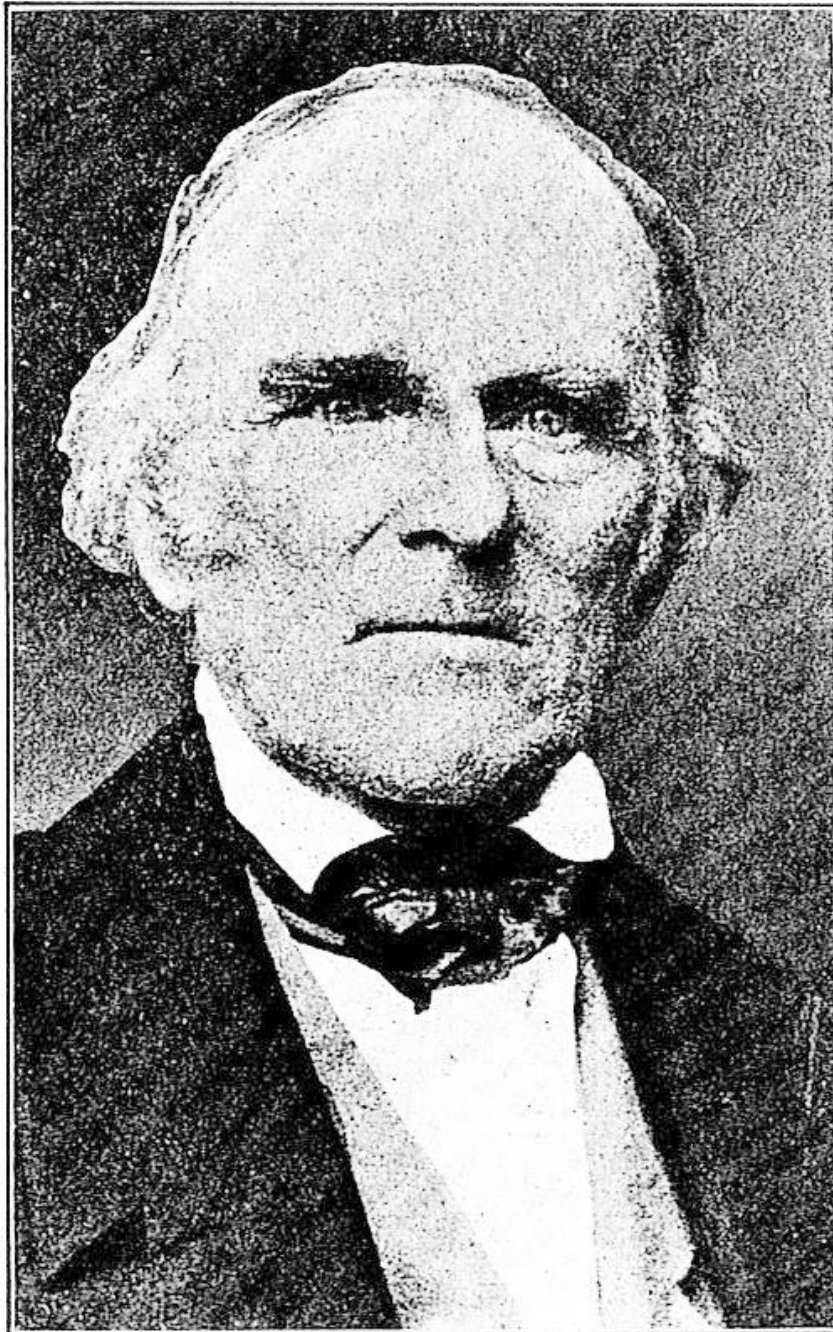
On the 28th of June, 1863, General Early, while advancing on York, sent Col. French with a detachment of the 17th Virginia Cavalry to burn the railroad bridges between Mount Wolf and York Haven. While at Mount Wolf they entered Wolf's store and found Geo. H. Wolf busy packing shoes, boots, hats and other clothing to be taken across the Susquehanna River away from the Confederate Army. They took the goods from him, paid for them in confederate currency, which they proudly affirmed would soon be "better than your greenbacks, as we are now on our way to Harrisburg, Philadelphia and New York and the war will soon be over."

William Wolf was later elected Sheriff of York County, and the business was taken over entirely by Geo. H. Wolf, Oct. 26, 1863. The business was growing rapidly and, in 1870 a large brick store building 40' x 60' was erected, with provision for Post Office and railroad office. Geo. H. Wolf served as postmaster for 30 years, and also acted as station agent, Express Agent, and Owner and Manager of the store.—On the second floor of this new building a school was opened.

### **Geo. A. Wolf Begins Business Career**

In the Spring of 1882, Geo. H. Wolf took his two sons Henry and George A. into the business, and conducted it under the firm name of G. H. Wolf & Sons. After spending 39 years in the business, Geo. H. Wolf decided to retire, and the firm again changed hands. Henry and Geo. A. Wolf were now the members of the firm, and the flourishing establishment went on under the name of G. H. Wolf's Sons, dating from July 24, 1891.

On December 31, 1895, Wolf's Mill, which manufactured flour and feed, broke down on account of overloading with wheat.



**Adam Wolf**

Actively Engaged from March, 1843, to October, 1863

---

20 Years' Service



**Edmund Wolf**

Actively Engaged from March, 1843, to March, 1852

---

9 Years' Service

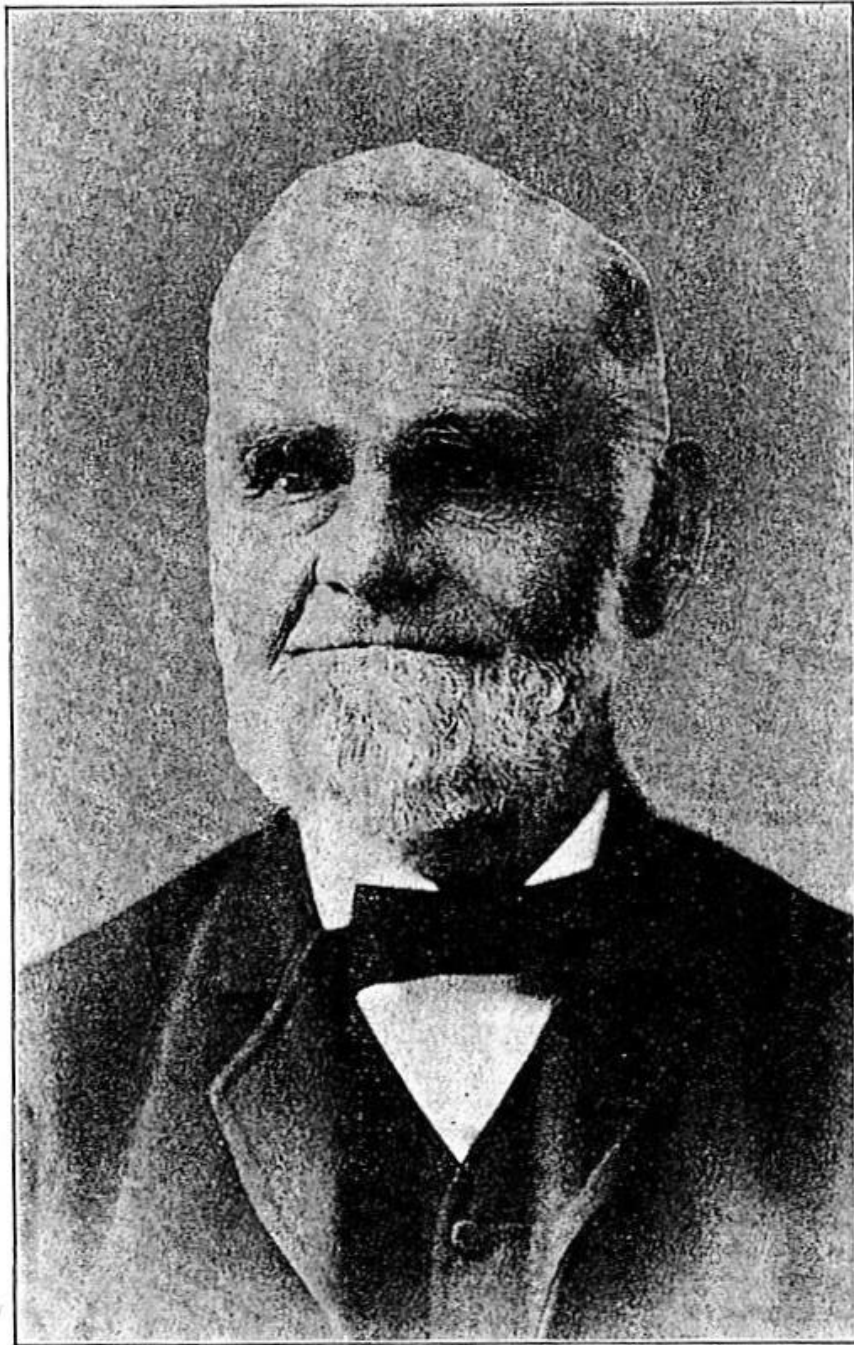


**William W. Wolf**

Actively Engaged from May, 1852, to October, 1863

---

11 Years' Service



**Geo. H. Wolf**

Actively Engaged from May, 1852, to July, 1891

---

39 Years' Service

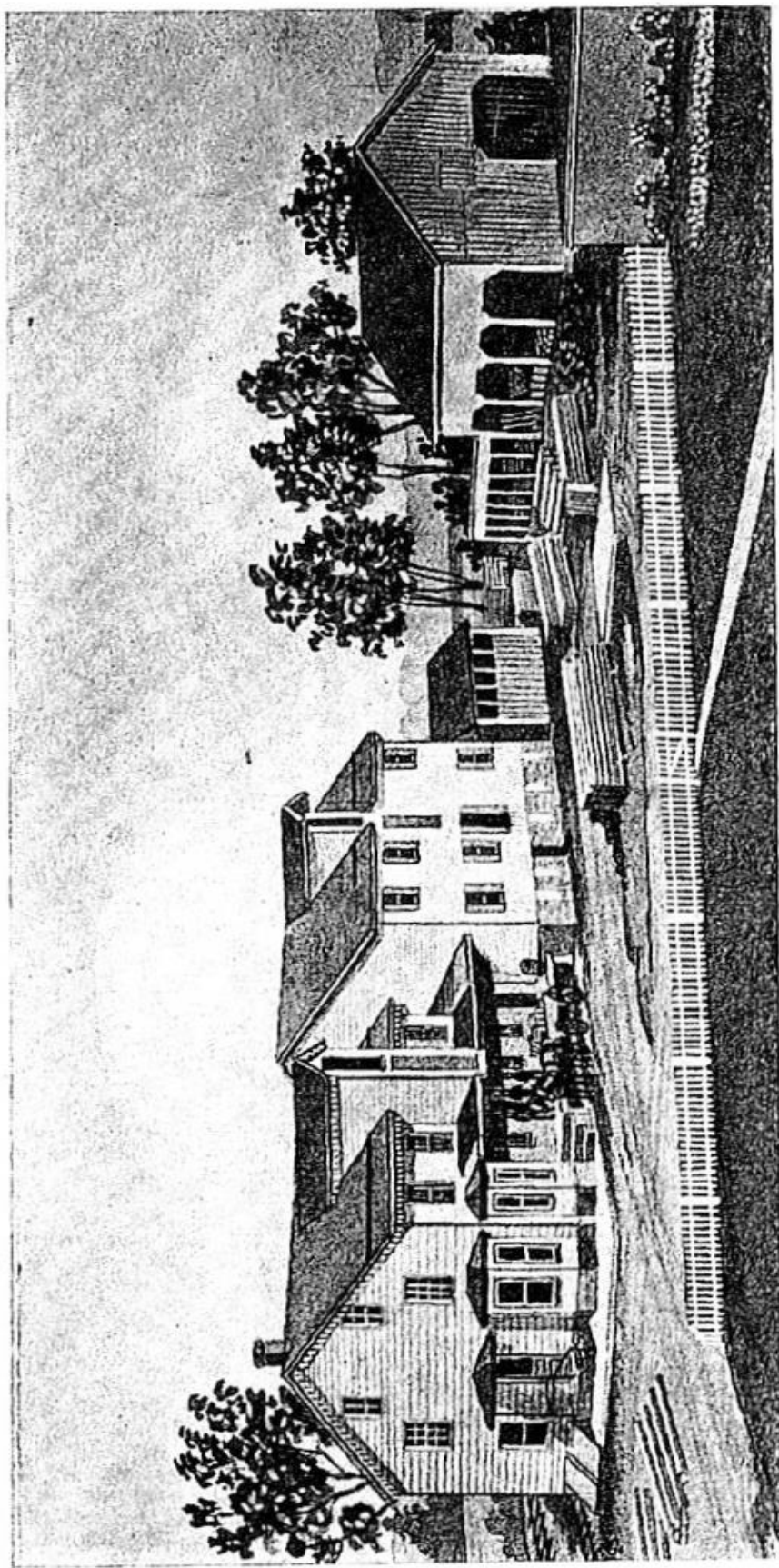


**Henry Wolf**

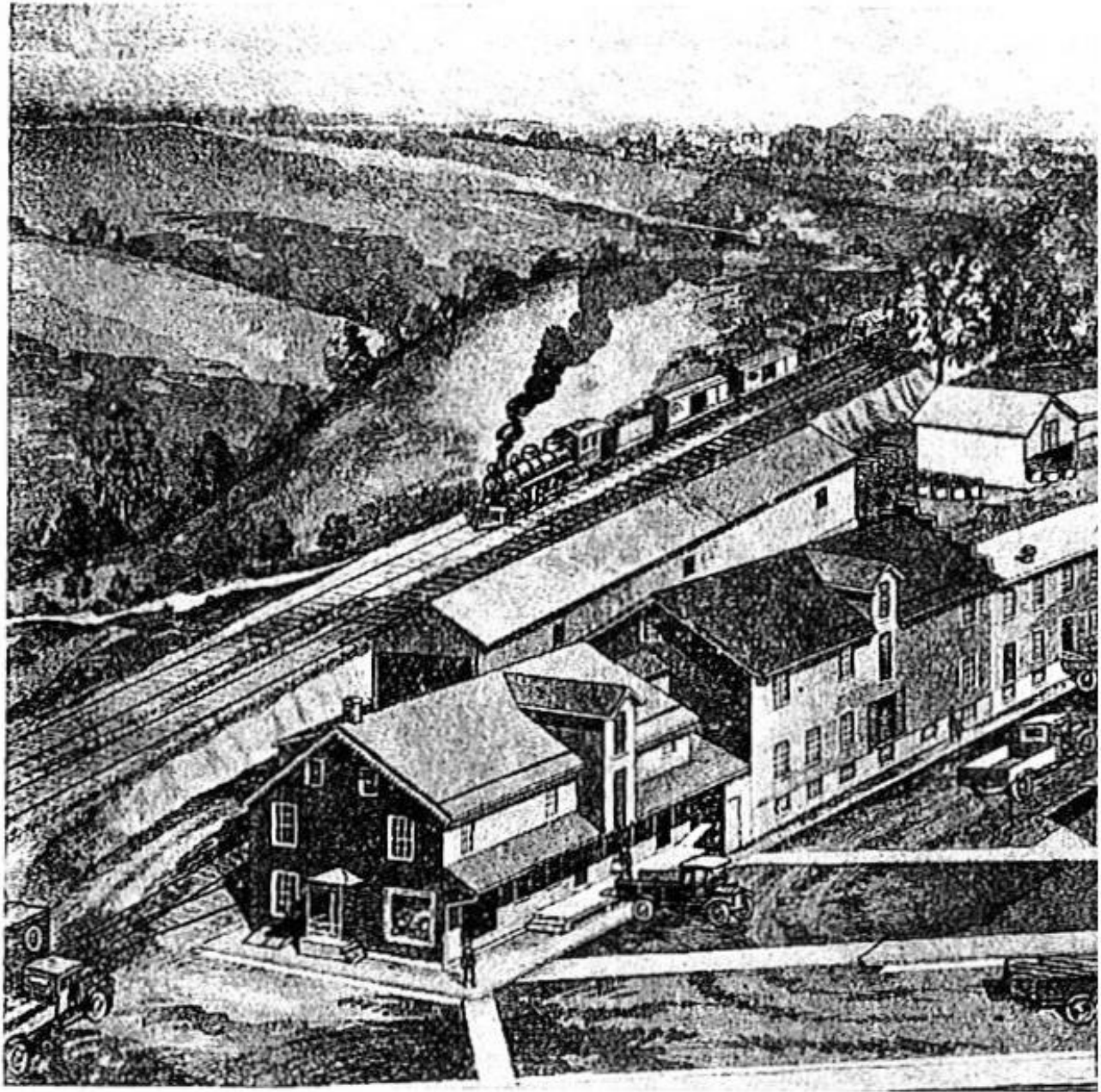
Actively Engaged from April, 1882, to May, 1914

---

32 Years' Service



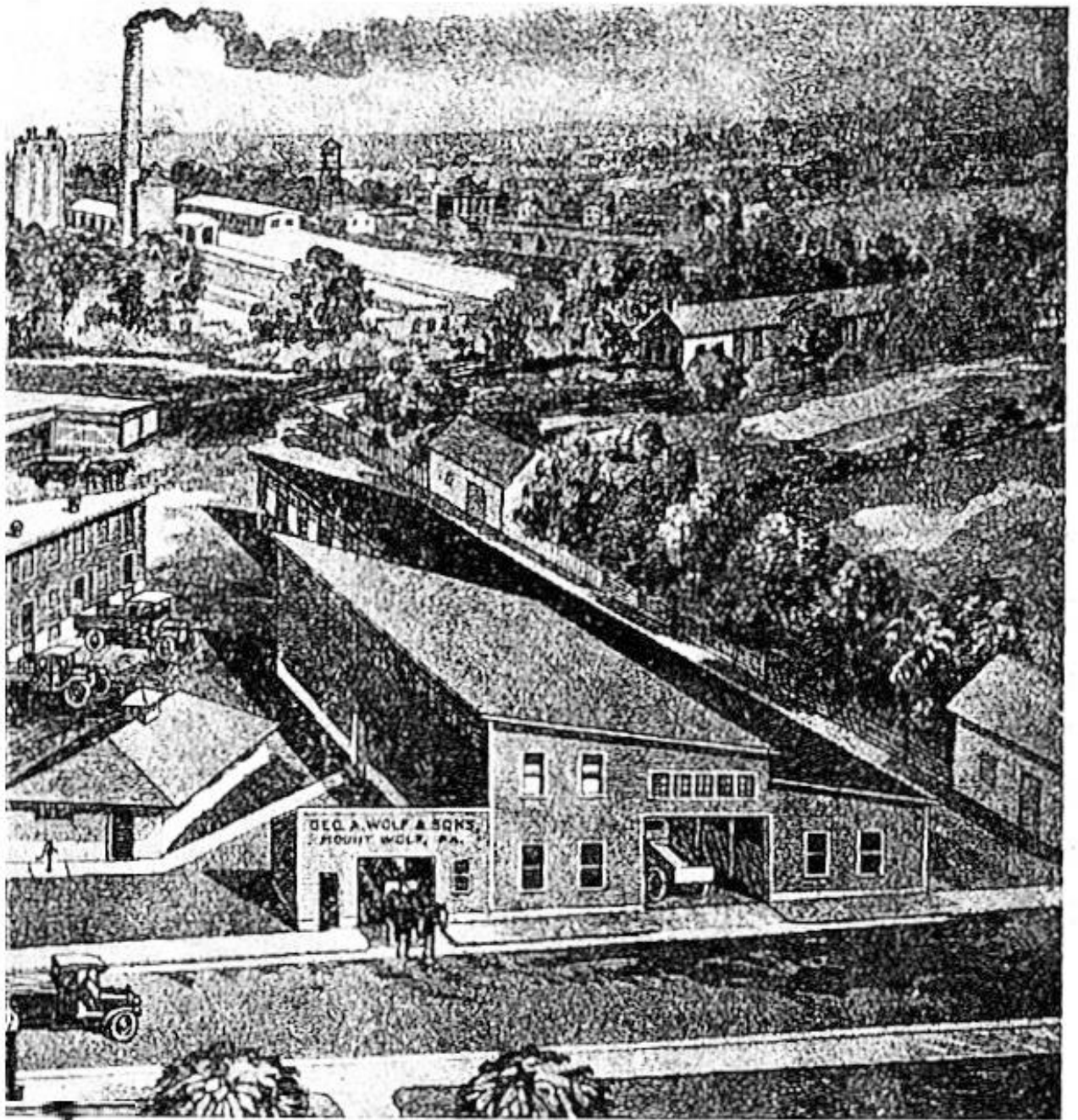
Establishment of Geo. A. Wolf & Sons—May, 1914



**Establishment of G**

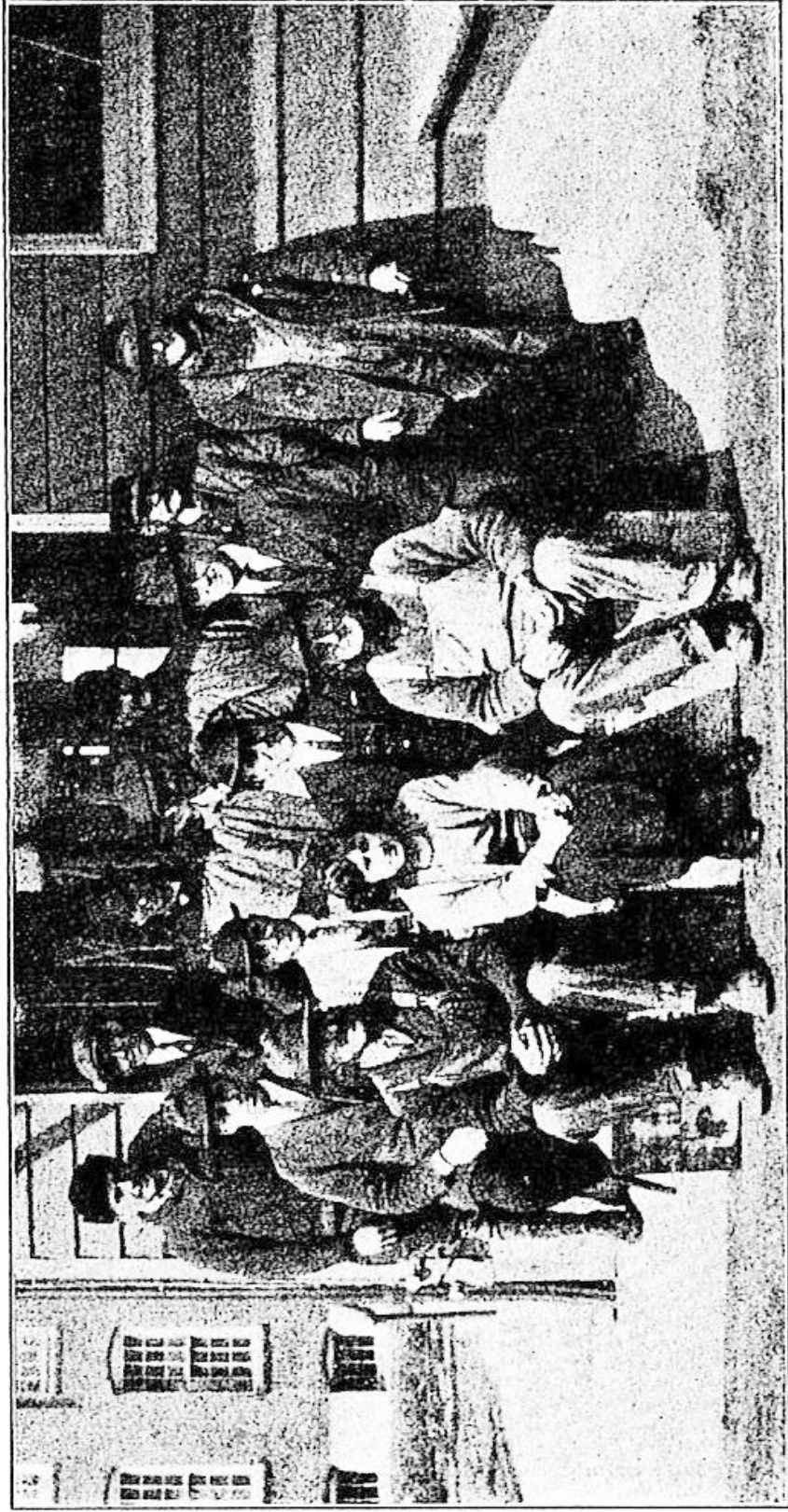
*May,*





Co. A. Wolf & Sons

1924



Employees of Geo. A. Wolf & Sons—May, 1924



**Geo. A. Wolf**

42 Years' Service (April, 1882, to May, 1924)

---

Executive of the Present Firm



**Geo. H. Wolf**

Member of Firm, Beginning May, 1914

---

Manager: Radio Dept.



**Chas. B. Wolf**

Member of Firm, Beginning May, 1914

---

Manager: Lumber, Building Supplies, and  
Hardware Depts.



**Earle L. Wolf**

*Member of Firm, Beginning May, 1914*

---

*Manager: Coal, Feed, and Fertilizer Depts.*

On May 11, 1900, the father, Geo. H. Wolf, died. During the same year The Mount Wolf Furniture Co., was organized.

David Hoover, who for many years was a faithful employee of the Wolfs, died in March, 1902.

In May, 1907, an important change was made in Wolfs' warehouse: an electric hoist for grain replaced horses used formerly.

In 1909, The Mount Wolf Furniture Co. purchased the store building and built an addition to their factory. The business of the Wolfs' was again moved back into the original warehouse that was erected in 1852. There the office and store were remodeled. The Groceries and Dry Goods end of the business was discarded and Hardware was stocked more extensively. On May 6, 1914, the firm of G. H. Wolf's Sons was dissolved.

### **Geo. A. Wolf & Sons Organize**

**May 7, 1914**

The firm of Geo. A. Wolf & Sons started business with Mr. Geo. A. Wolf, the Senior Member, and his three sons, Messrs. Geo. H. Wolf, Chas. B. Wolf and Earle L. Wolf. The active members were Messrs. Geo. A. Wolf and Chas. B. Wolf, assisted by Mr. J. J. Rodes, Yard Manager, and two teamsters. There were no trucks used at this time, for the two teams were sufficient to handle the required quantities of Lumber and Feed. During the first Summer very little was done in the line of enlarging the business because it required all the time of the new member, Mr. Chas. B. Wolf, to get acquainted with some of the real responsibilities of the firm. There were, however, a few general improvements during the Summer and Fall of 1914. During this first year we received 104 Carloads of Material consisting chiefly of Coal, Lumber, Cement, Fertilizer and Feed.

### **1915: Expansion Begins**

With the opening of the New Year, we secured the service of another partner of our firm as an active member in the person of Mr. Earle L. Wolf. Prior to this time he had been employed by the American Wire Fabrics Co., at Clinton, Iowa, where he served as cashier. In the early part of 1915 we enlarged our executive quarters and constructed a private office to be occupied by Mr. Geo. A. Wolf and Chas. B. Wolf. At the same time the store room was enlarged by the addition of 60 sq. ft. of space. Our attention was next directed to our coal shed which was in such unsatisfactory condition that new switch timbers were necessary, so it was decided to build new cement piers instead of wooden ones, and this work was begun in March. Our coal business was hampered very much during this construction work, and it was not until early in August that our heavy switch timbers finally arrived. Early in October we unloaded a carload of Coal in this new shed for the first time. During the Fall we received our first car of Hydrated Lime which was unloaded in the Red Mill Property. To our amazement, next day, we discovered that the floor had given way, and we were compelled immediately to make provision to move our lime.

The Mount Wolf Realty Co. constructed twelve houses during the year. We were favored with the business connected with this work, and, as a result, our "cars received" record showed a decided increase. It should also be noted here that we added two more piers to our Coal Shed.

A total of 135 Carloads of material were received during 1915.

### **1916: Big Year in Fertilizer**

During this year we spent all our spare time hauling stone and preparing for the



completion of our Coal Shed. 1916 is notable also for the fact that our business in Fertilizer doubled.

We received 114 Carloads of Material.

### **1917: Coal Shed Completed**

It was in the course of this year that we finally completed our Coal Shed. The Cement work was in charge of Messrs. Shank and Bailey, while the Carpenter work was taken care of by Mr. Curvin Gingerich and his men. This new Coal Shed consists of 5 cemented bins with a capacity of 400 tons, and 5 Automatic self-loading bins with a capacity of 600 tons. It became necessary to erect several large retaining walls, which was done during the Summer. Extra delivery equipment was now required to keep pace with the expansion of our business, and we purchased our first truck, a One-ton Service which was operated by Mr. Jacob Fitzkee.

On November 2 of this year our Mr. Earle L. Wolf entered the U. S. Army, and the loss of his assistance was keenly felt in the business.

We received 119 Carloads of Material during 1917.

### **1918: Employed Force Increased**

Our office and store were given special attention this year. We studied more closely than ever our Hardware requirements, and several new lines were added. Our yard force was increased by adding an assistant yard man; and in the office we acquired the services of a stenographer. On account of the War, difficulty was experienced in getting permits to have cars come through.

We received 114 Carloads of Material this year.

### **1919: Garage and Siding Shed Built**

In February we concreted the cellar of our feed warehouse, and added 2700 sq. ft. to

our buildings. We constructed a runway from the porch to our large warehouse and built a garage to accomodate five trucks. It is 24' x 48' and is equipped with gas tanks and hot-water heating plant. Mr. Herman H. Fink had charge of this work.

During the month of June we were greatly cheered by the safe return of our Mr. Earle L. Wolf after 19 months' service in Uncle Sam's Army. He had spent 11 months of that time overseas. On July 1 he resumed active work in our business.

In the Fall of this year we moved what was known as the White Shed to another location and is now being used as our siding shed. This building measures 20' x 50'. The work was in charge of Mr. L. J. Eisenhower, assisted by our employees.

We received 143 Carloads of Material this year.

### **1920: Large Storage Warehouse Erected**

The roof of our new Coal Shed was now showing signs of damage. Smoke from the engines had created a gas that caused holes to appear in the iron. Therefore it was necessary to tear this roof off and put on one that would be satisfactory and durable in every way.

Other improvements made during this year were as follows: the basement of our store was remodeled and enlarged, and our paint and glass were moved to this department.

During the late Summer and Fall we began the erection of a new warehouse, 100' x 36', consisting of basement, main and second floors. This building was used as storage for Millwork, Fertilizer, Lime, Cement, Plaster, Hay and Straw, Dressed Lumber and Roofing. A place was provided for our horses and arranged in excellent manner.

Our rip-saw was moved to the basement of this building. Mr. L. J. Eisenhower had general charge of this work.

We received 141 Carloads of Material this year.

#### **1921: 15-Ton Howe Scales Installed**

We now had to face the immediate need of a modern feed building, and early this year we provided this improvement.

A new 15-ton Howe Scales was purchased and a suitable building erected to accommodate it. Storage for Coal Chutes was also provided, as well as separate coal bins for balancing loads.

Our store and office were enlarged by making use of the whole first floor of the building in which the *entire business* was carried on in 1852. Three private offices and a general office were constructed; and the store arrangement in every detail was put on a systematic basis.

We received 164 Carloads of Material during 1921.

#### **1922: New Lumber Shed Constructed**

An important item of expansion this year was that the old sheds were torn down along the alley, and a lumber shed 60' x 150' with two decks was built in their stead. A half million feet of lumber can be stored in space now available.

We received 168 Carloads of Material this year.

#### **1923: Large Sand Pit Built**

In an effort to continue to keep pace with the demands for building material of every sort, we found it necessary to construct a sand pit of 100-ton capacity. Furthermore, considerable grading was done and the concrete work finished to add to our lumber shed an addition 60' x 100' with 2 decks.

Another big step taken this year was the laying of a large sewer to take care of the surface water between the Garage and Warehouse.

We received 197 Carloads of Material this year.

### **1924: Celebration of Tenth Anniversary**

During February and March the addition to the Lumber Shed was completed.

We are now operating the following: 4 trucks, varying in capacity from 1 to 3 tons; and 2 double teams.

It gives us great pleasure to state that there are 14 persons now connected with the firm, and during the first quarter of this year we received 60 Carloads of Material, or nearly half the amount for the whole year of 1915.

All things taken into consideration, therefore, the celebration of our tenth anniversary as a newly organized firm, in May of this year, will occur at the very peak of our advancement and expansion to meet the ever-growing needs of our ever-growing and wide awake community and out-lying points. We spare no expense to modernize our whole establishment in order to provide better service, in every detail of our business, for a progressive and industrious locality.

---

**OUR SUCCESS IS YOURS—YOURS IS OURS**

# **YOUR BEST INVESTMENT**

## **Own Your Home**



**TO** enjoy the best of happiness and prosperity every man should own his home.

**THE** best way to improve your Lot is to build a home on it.

**KNOW** the thrill of pride that goes with home ownership. It's a wonderful feeling.

**OUR** modern building service enables you to have a home of your own on an economical basis.

**OUR** interests are mutual! Consider us your partner in every building enterprise and our service to you will be a partner to your betterment and success.

**REMEMBER**, we specialize in Building Material from foundation to roof.

---

*Do it today—not tomorrow*

**FOR PLANS AND MATERIAL SEE  
GEO. A. WOLF & SONS**

MT. WOLF, PA.

has

Four Industries

Employing

500 People



We Have Excellent  
Locations for Several More  
New Factories



When Planning to Locate Your  
Industry, Consider the Many  
Advantages Offered  
Here

## **WE WANT YOUR OPINION!**

**If you like this book,**

*Please write and tell us so;*

---

**If you don't like it,**

*Please write and tell us why;*

---

**If you think it can be improved,**

*Please write and tell us how,*

---

**If you take issue with any of the  
ideas presented,**

*Please write and tell us which.*

---

**When you need items we handle,**

*Please order from us.*



# WOLF'S

MOUNT WOLF  
PA.

